

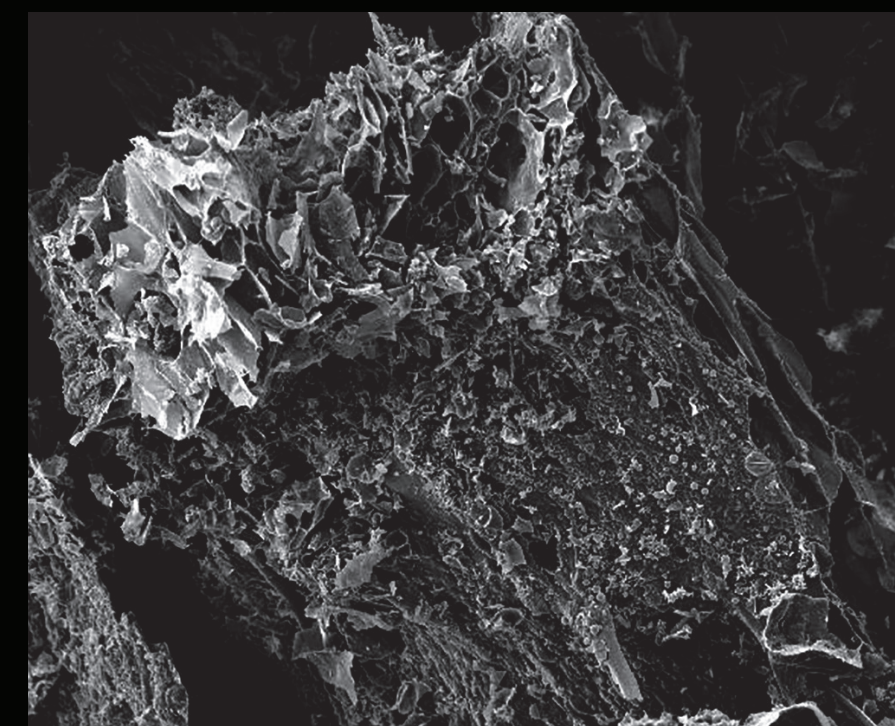
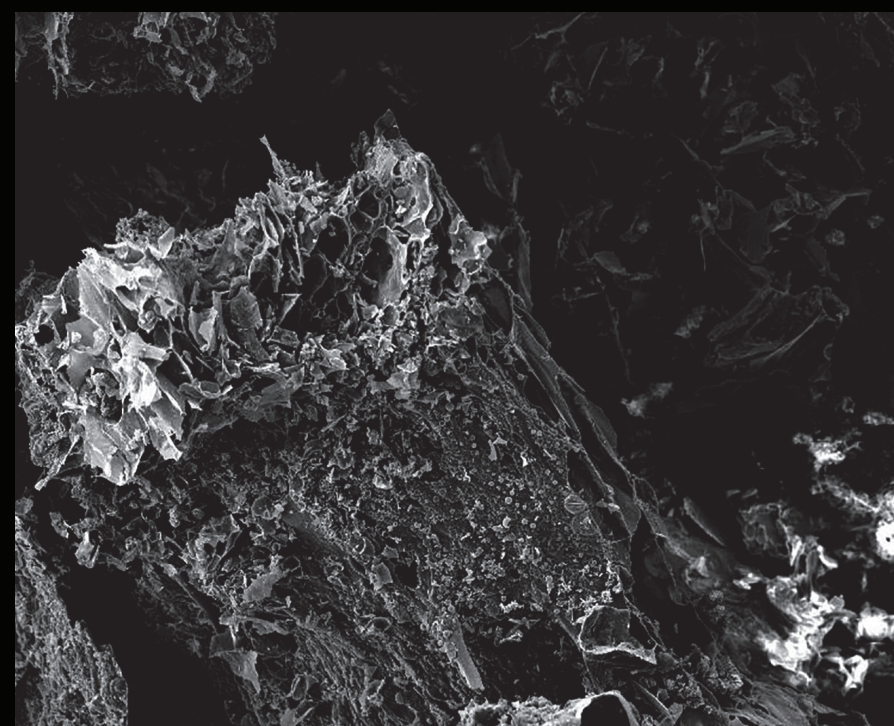
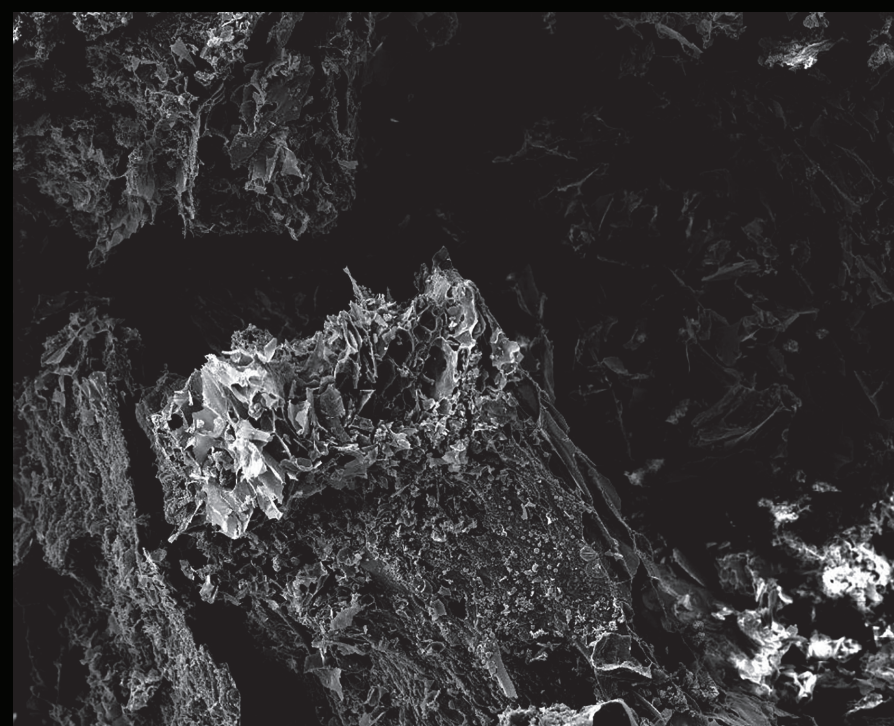
CALVIN BALDASARI
MATT BARKER
SARAIA BROWN
PAYTON DICKERSON
JOCELYN GIBBONS
BEN HERR
MICHELLE COLBY HUGHES
BROOKELYN JONES
ANDI KEATING
SAMANTHA NOKES
EMMA PLATH
CHRISTIAN SERWORLD
DANIL SONJAYA
SDIE SULLIVAN
ADAM VINCENT
HAYLEY WEATHERSTONE
HAILEY WILLIAMS

HIGH TECH

HOLGA MO7

Exhibition dates: **February 19 – March 4**

Exhibition location: **Mindport**



SPECIAL THANKS TO

CHARLES WANDLER
GARTH AMUNDSON
NATHAN CRANSTON
CHLOE DICHTER
JOE ADDISON

Utilizing the Scanning Electron Microscope (SEM) and the HOLGA toy camera, students juxtapose two interpretations using wildly different technologies. Conceptually, they consider the contrast between capturing images with a high-tech microscope and making images with a simple analog camera.

Using the diptych format, they literally compare these two interpretations by setting them side-by-side. Scanning Electron Microscopes are capable of magnifying up to 3,000,000 times.

Meanwhile, HOLGA, first appearing in 1982 in Hong Kong, was introduced as an inexpensive mass-market camera for the working-class. Since then, artists have been using them to explore and push the boundaries of conventional image production with a larger format negative.

This project literally joins high-tech to low-tech and poses questions regarding the dialogue created within a diptych format. Technical acquisition includes training on the SEM scanner and using the HOLGA to create 2 14 negatives. Research involves establishing a dialogue between two images, either conceptually or formally through the use of narrative and abstraction.